

7/8/70

150-6

Terrace-Wittfenberg Elevation Determination

Control Benchmark: 80M 6PM

Location	Pressure Up	Pressure Down	Map Elev.	Interp UP	Interp DOWN	Elev Avg	1969
Woodland Creek	29.70	29.61	1200				
End Welterk Flats, begin climb	29.62	29.52	1775	1275	1286	1280	
Spring	29.54	29.44	1750	1350	1363	1355	
Registration Booth	29.50	29.40	1385	1385	1398	1390	1400
Unravel end Trail deflected E	29.34		1630				
Blaze Line		29.20			1591	1590	
Gate	29.23	29.15	1675	1630	1643	1635	1660
Rest stop	29.18	29.10	1675	1675	1693	1685	
Fiddler's Elbow	28.72	↑	2100				
Lean-to	28.46	28.42	2350				
90° bend 1st open burn	28.31	28.25		2490	2490	2490	
2nd open burn: BM 2556	28.24	28.18	2556				
3rd semi-open burn	28.12	28.06	2640	2665	2665	2665	
Fallen large beech, trail steepens	28.04	27.96	2740	2740	2772	2755	2710
20' oak, trail turns W	27.99	27.90	2800	2785	2811	2800	
Transect # 11	27.90	27.81	2900	2870	2889	2885	
74 Fir on Road	27.85	27.78	3000?	2915	2919	2915	
End bark road 10' high	27.78	27.73		2975	2963	2970	
End Bark Road							
Lower lookout (trail split above)	27.53	27.48		3200	3190	3195	3250
Trail through crevice E-W top		27.37			3291	3290	
Upper lookout	27.29	27.23		3425	3421	3425	
Trail turns W; straight pseudo trail		27.18	blacked off		3461	3460	
"Wall" ledge, blind canyon to W	27.20	27.13		3500	3511	3505	3530
Rock shelters E-shade	26.94						
Spr trail June to spring	26.96	26.90	3670	3725	3721	3525	3710
Summit Wittfenberg	26.90	26.83	3780				

In the E (5) is there ridge hand growth, or does Sugar lead into S-F?

Where is it?

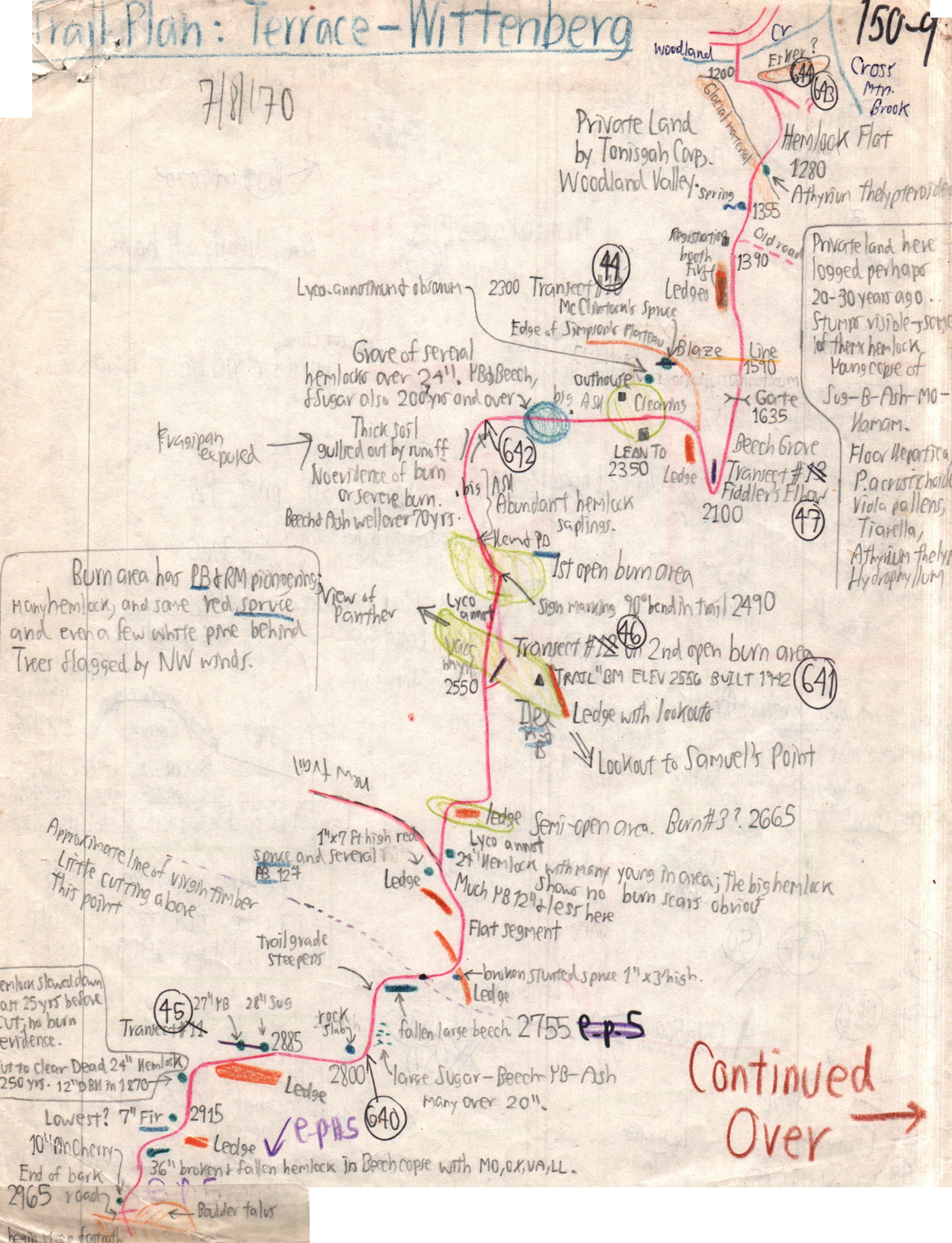
S-F grading to hold

Dense pole stand but not difficult

Trail Plan: Terrace - Wittenberg

7/8/70

150-9

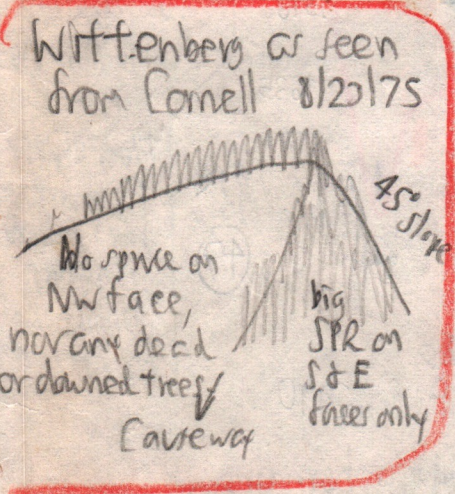


Continued Over →

continued from other side 150-10

Time of ascent on 7/8/70
Woodland Valley to Cornell:
2 hrs 20 min.

8/23/75
Lv Base 9:05
Ar Witt 10:50
Ar Cornell 11:10



Vacc. myrt. & Nemoanthus & Rhododendron reseau along trail
Cornell in sunny blowdown. Repro. some spruce, but mainly PB.

Trail through crevice
Pseudo-lockout 3290

First Lookout 3195
Trail splits #66

Ledge Nearly all hardwood

10" Pinchery
(12' of base in 1975)
End bark road; begin footpath 2970
← (639) at 3070'

PB root climb
Spruce fir yielding to hardwood

Upper Lookout 3425
#67
E-PB break here
Nearly all spruce-fir

Trail apparently heads S, but actually turns steep up west 3460

Spruce Flat blowdown on NW end

Wall Ledge 3505

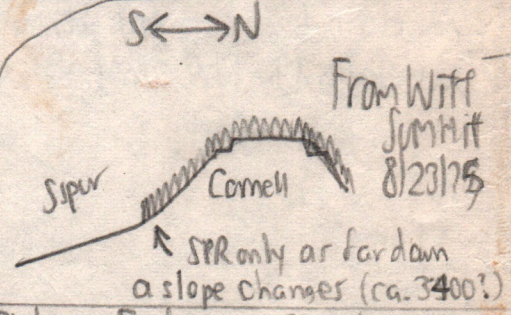
20 1/2" Spruce drying

#68
Spruce flat non-blowdown
Trees to 12' x 40 ft

Amel bark Nemo

Spring Junction 3725

Spring 3680?



Landslide on Friday with 2 gullies 8/23/75

Some large spruce on W slope Witt above col to 20" x 30 ft. and on N slope 3500-3700 feet.

Natural rock shelter 3760

Summit 3780 (638)

Transsect # 51

Col 3560

Crack ledge 3790

Cornell summit 3860 (635)

Wishokan Trail

More herb shrub layer in semi hard slope as below Cornell 3790 crevice. AA-VA-MM-MO.

Alternating small areas (to 100-300 ft across) of blowdown + non blowdown.

